



Jackson[®]
JACKSONGUITARS.COM



Cover Artist: Mille Petrozza
Photo: Natalia Stupnikova

Inside Artist: Scott Ian
Photo: Helen Simmons

Jackson Instruments

Jackson has devoted itself to superior style, tone and performance for more than 30 years now, creating the premier sonic weapons of choice for discerning guitarists and bassists worldwide. Onstage and in the studio, Jackson guitars and basses are universally prized and praised as *the* go-to shred machines.

Jackson guitars and basses have always risen to every occasion as finely crafted instruments of distinctive style and formidable substance. They're designed to deliver the dark yet dazzling mojo commanded by virtuoso players everywhere in the most demanding musical realms, and their distinctive aesthetics and tonal power, purity and finesse remain unmatched.

That's what you'll find in the selection presented here. Welcome to the very latest in Jackson design and performance—a feast for eyes and fingers alike.

Play the Best and F#@k the Rest!

- 04** Jackson Custom Shop
- 06** USA Select
- 22** Artist Signature
- 40** X Series
- 50** JS Series



**Design the Jackson guitar of your dreams
now at jacksonguitars.com/guitarbuilder**





Jackson Custom Shop

The world-famous Jackson Custom Shop is the world's longest-operating custom shop, turning out world-class custom guitars ranging from the fine to the fantastic ever since Grover Jackson first affixed his name to a headstock in 1980.

The reason for this amazing longevity is simple: Jackson *began* as a custom shop. In the beginning, there were no production guitars—*every* Jackson guitar was a highly original high-performance custom instrument.

Whereas some production guitar makers open their own custom shops well after reaching a certain age or level of success, Jackson existed from its very earliest days as nothing *but* a custom shop, building distinctive and meticulously crafted instruments for a very exacting clientele. Further, from the very start, no design was too crazy and no idea was too far out—if someone could conceive of it, Jackson's talented, imaginative and occasionally demented craftsmen could build it. This early emphasis on true uniqueness and outlandish one-off instruments proved enormously influential on Jackson's most famous and oft-copied body shapes.

It's a longstanding tradition of U.S.-made greatness and devotion to craft that continues, indeed, flourishes, to this day. The Jackson Custom Shop—the *original* custom shop.

jacksonguitars.com/customshop







USA Select

From bridge to headstock, Jackson USA Select Series Guitars and basses are the very essence of *badass* rendered in wood and metal. Nowhere else will you find U.S.-built production-model shred machines of such stellar design, peerless performance and superior craftsmanship. Of all Jackson's most acclaimed and beloved series, the USA Select Series puts the best of Jackson's best in most capable hands—yours.

[*jacksonguitars.com/usaselect*](http://jacksonguitars.com/usaselect)



USA SL1 Soloist

- Alder body (flame maple top on trans finishes)
- Quartersawn hard rock maple neck-through body
- Compound-radius ebony fingerboard
- Seymour Duncan® pickups in HSS configuration
- Floyd Rose® Original tremolo
- Black hardware (chrome hardware on trans finishes)

Model Number: 2803070

Model Number: 2803170 (LH)

USA SL2H Soloist

- Alder body (flame maple top on trans finishes)
- Quartersawn hard rock maple neck-through body
- Compound-radius ebony fingerboard
- Seymour Duncan® humbucking pickups
- Floyd Rose® Original tremolo
- Black hardware (chrome hardware on trans finishes)

Model Number: 2803071

Model Number: 2803171 (LH)



USA Select Soloist™

The concept of creating a sleek and deadly instrument combining a traditional double-cutaway body style and scale length with shark-like high-performance was ingrained into Jackson's DNA at birth. The resulting instrument, the Soloist, debuted in 1983.

Featuring an incredibly addictive compound-radius fingerboard and a new pitch on its through-body neck, this highly versatile instrument was born to shred. With those features and its alluring good looks, it's easy to understand why the Soloist has earned so much acclaim.

*One of the most popular
and oft-copied Jackson models of all time ...*



USA SL2HT Soloist

- Alder body (flame maple top on trans finishes)
- Quartersawn hard rock maple neck-through body
- Compound-radius ebony fingerboard
- Seymour Duncan® humbucking pickups
- String-through-body bridge
- Black hardware (chrome hardware on trans finishes)

Model Number: 2803076

USA SL2H-MAH Soloist

- Mahogany body with flame maple top
- Quartersawn mahogany neck-through body
- Compound-radius ebony fingerboard
- Seymour Duncan® humbucking pickups
- Floyd Rose® Original tremolo
- Chrome hardware

Model Number: 2803072

USA Select Randy Rhoads

The Jackson® Randy Rhoads model is the legendary instrument that started it all. Born in late 1980 from a design drawn on a napkin by the late, great guitarist himself and by the company's founder, Grover Jackson, this instrument is one of the most revered, respected and recognized shapes in hard rock and heavy metal. It's so highly regarded by the metal-loving masses that in 2006 it was voted "Legendary Guitar" in *Guitar World* magazine's 25th anniversary readers poll. Just like its creator, this sleek instrument is both peerless and untouchable.

A timeless classic that will always endure and inspire ...





USA RR1 Randy Rhoads

- Alder body (flame maple top on trans finishes)
- Quartersawn hard rock maple neck-through body
- Compound-radius ebony fingerboard
- Seymour Duncan® humbucking pickups
- Floyd Rose® Original tremolo
- Black hardware (chrome hardware on trans finishes)

Model Number: 2803060

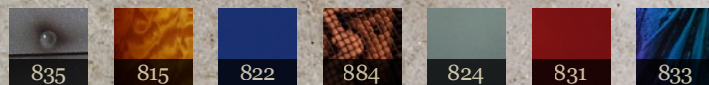
Model Number: 2803160 (LH)

USA RR1T Randy Rhoads

- Alder body (flame maple top on trans finishes)
- Quartersawn hard rock maple neck-through body
- Compound-radius ebony fingerboard
- Seymour Duncan® humbucking pickups
- String-through-body bridge
- Black hardware (chrome hardware on trans finishes)

Model Number: 2803061

Model Number: 2803161 (LH)







USA Select Warrior™

In late 1989 Jackson® introduced its most outlandish and brutal-looking body design—the aptly named Warrior. Created with a dark new breed of artist in mind, it was designed as a truly vicious-looking new weapon with smartly savage styling. In fact, a close look at the X-shaped Warrior reveals the method behind the madness, as every angle resembles the distinctive Jackson headstock.

The Warrior always emerges victorious ...



USA WR1 Warrior

- Alder body (flame maple top on trans finishes)
- Quartersawn hard rock maple neck-through body
- Compound-radius ebony fingerboard
- Seymour Duncan® humbucking pickups
- Floyd Rose® Original tremolo
- Black hardware (chrome hardware on trans finishes)

Model Number: 2803080



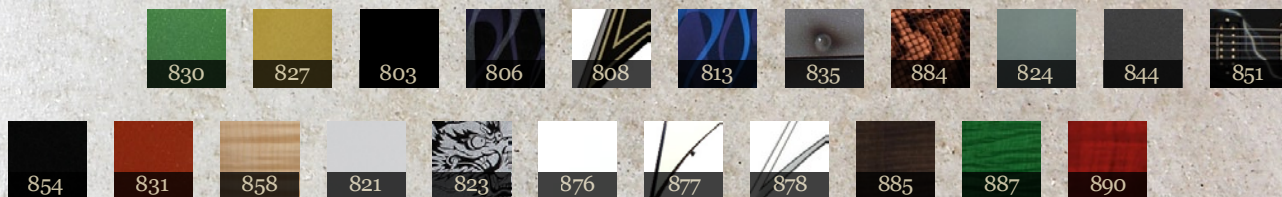


USA Select King V™

With metal exploding with fret-burning flamboyance in the mid-1980s, many artists clamored for Jackson® Rhoads-style personality and playability in a larger-bodied axe better suited to taller players (remember, despite his larger-than-life talent, Randy Rhoads was a diminutive 5'2"!).

In keeping with their creative M.O., Jackson's custom builders responded with a classic design combining the high-performance Rhoads with a larger, slightly more traditional V-shaped body. Thanks to its head-turning (and banging) looks and incredible playability, the regal King V remains a firm favorite in the Jackson line and continues to reign.

Long live the King ...



USA KV2 King V

- Alder body (flame maple top on trans finishes)
- Quartersawn hard rock maple through-body speed neck
- Compound-radius ebony fingerboard
- Tall medium frets
- Seymour Duncan® humbucking pickups
- Floyd Rose® Original tremolo
- Black hardware (chrome hardware on trans finishes)

Model Number: 2803040

USA KV2T King V

- Three piece mahogany through-body speed neck
- Compound-radius ebony fingerboard
- Tall medium frets
- 24.75" scale
- Seymour Duncan® humbucking pickups
- String-through-body bridge
- Black hardware (chrome hardware on trans finishes)

Model Number: 2803041

USA Select Kelly™

Born to be played onstage and armed with an eye-catching shape and lightning-fast neck, the Kelly has been a popular Jackson® staple ever since its 1983 introduction. When the U.K.'s prestigious *Guitarist* magazine published its special "Book of Metal" issue, it referred to the Kelly as, "one helluva guitar with a truly massive sound. Arguably the be-all and end-all of rock guitars. This has to be the coolest axe ever from one of the genre's greatest names."

Enough said. We rest our case.





USA KE2 Kelly

- Alder body (flame maple top on trans finishes)
- Quartersawn hard rock maple neck-through body
- Compound-radius ebony fingerboard
- Seymour Duncan® humbucking pickups
- Floyd Rose® Original tremolo
- Black hardware (chrome hardware on trans finishes)

Model Number: 2803030



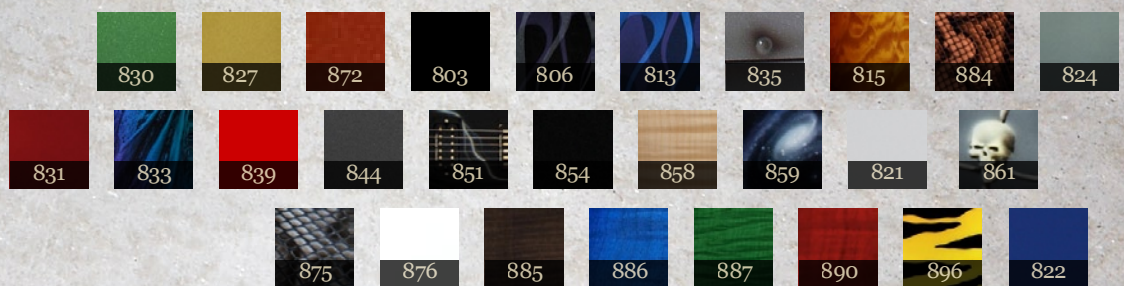


USA Select Dinky™

Despite the incredible popularity and playability of the Soloist™, some guitarists sought an instrument that boasted the company's trademark speed and high performance in a bolt-on-neck model similar to those made by Jackson's famous older sibling, Charvel®.

Jackson's designers responded by creating a bolt-on brother to the Soloist featuring a slightly smaller body that lightened and further streamlined an already sleek design. Dubbed the Dinky, it was another innovative breakthrough in a long line of Jackson firsts. It was an immediate success and it has flourished ever since.

This highly sought-after six-string family has grown to more than a dozen members ...



USA DK1 Dinky

- Alder body (flame maple top on trans finishes)
- Bolt-on quartersawn hard rock maple neck
- Compound-radius ebony fingerboard
- EMG® 81 and 85 humbucking pickups
- Floyd Rose® Original tremolo
- Black hardware (chrome hardware on trans finishes)

Model Number: 2803010



Photo: Natalia Stupnikova

Mille Petrozza
Kreator



Photo: FotoBab

Wayne Lozinak
Hatebreed



Photo: Romuani Dronne

Joseph Duplantier
Gojira



Photo: Ashley Ellwood

Jacky Vincent
Falling in Reverse



Photo: Ash Newell

Rick Savage
Def Leppard



Photo: Stephan Solon

Wes Borland
Limp Bizkit



Photo: Lee Robinson

Courtney Cox
The Iron Maidens



Photo: Toni Salminen / Metalscope.net

Pekka Johansson
Amoral



Photo: Patrick O'Dell

Derek Miller
Sleigh Bells



Photo: Toni Salminen

Ben Varon
Amoral



Photo: Gabrielle Duplantier

Christian Andreu
Gojira

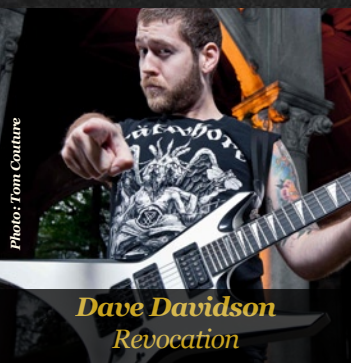


Photo: Tom Canture

Dave Davidson
Revocation



Photo: Mike Lally

Dan Gargiulo
Revocation



Photo: Valerte Nerves

Metal Mike Chlasciak
Rob Halford

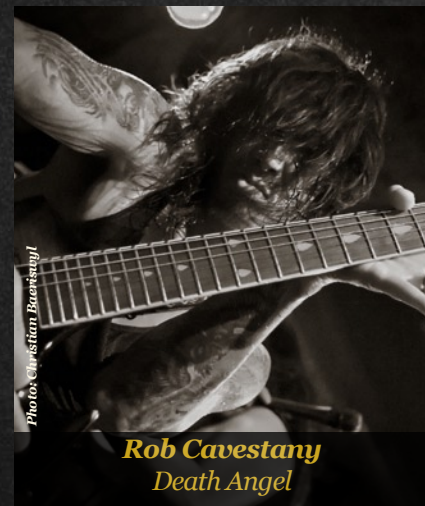


Photo: Christian Baerzstahl

Rob Cavestany
Death Angel



Photo: Shaky Evans

Jon Laux
Warbringer



Photo: Inga Silekai

Ola Lindgren
Grave



Photo: Mehmet Turgut

Ashmedi
Melechesh



Photo: The Ron / redditphotohelp.com

Alan Glassman
Job for a Cowboy

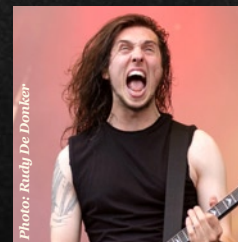


Photo: Rudy De Donker

Matt Drake
Evile



Corey Beaulieu
Trivium



Randy Rhoads
Ozzy Osbourne

Photo: Jay Bambury

Other Artists

Nick Baranov	Rattlehead
Anders Bertilsson	Coldworker
Daniel Freyberg	Norther
Fufu	Nothnegal
Lance Harrison	Hirax
Steve Harrison	Hirax
Peter Hasselbrack	Bloodsoaked
Helmuth	Belphegor
Hilarl	Nothnegal
Jake Kiley	Strung Out
Christian Olde Wolbers	Arkaea
Oscar Ramirez	Pathology
Terry Roadcase	Blackguard
Glenn Rogers	Heretic
Daniel Schröder	Coldworker
Dave Sharman	--
Laura V	LA Velvet
Markus Vanhala	Omnium Gatherum
Frank Aresti	Fates Warning
	Dark Day Sunday



Ryan Neff
Miss May I

Photo: Derrick Austin.com



Andreas Kisser
Sepultura

Photo: Matt Wilson



Misha Mansoor
Periphery

Photo: Sahism Sadarpo



Infernus
Gorgoroth

Photo: twilightheart



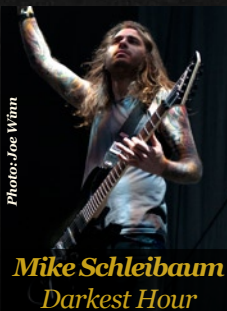
Shon "Shonny B" Hinton
Mary J. Blige,
John Legend, Lil Wayne,
Jill Scott

Photo: festjournal.com



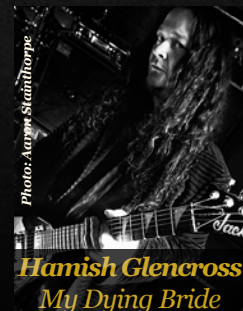
Ralph Santolla
Red.Scream/Obituary

Photo: Genevieve Hamel



Mike Schleibaum
Darkest Hour

Photo: Joe Winn



Hamish Glencross
My Dying Bride

Photo: Aaron Staudtcorp



Matt Brunson
Crowbar

Photo: Jimmy Lee

A black and white photograph of Chris Broderick, a long-haired man, playing a Jackson electric guitar. He is wearing a dark, patterned shirt and a watch on his left wrist. The background is dark and textured.

Chris Broderick

Megadeth

A stylized white signature of Chris Broderick, consisting of his first name and a large, flowing 'B' for his last name.

When Colorado virtuoso Chris Broderick joined a revitalized Megadeth in 2008, fans were awestruck by his dazzling thrash fretwork, and Jackson honors him as a modern metal master with the Chris Broderick Soloist in six-string and seven-string models. Working with Jackson® Custom Shop Master Builder Mike Shannon, Broderick designed his own special take on the venerable Soloist, with an offset arch-top mahogany body and quilt maple top (with matching headstock).



6-String Soloist
(also available in Black
and Transparent White)

7-String Soloist
(also available in Transparent Black
and Transparent Red)

Chris Broderick Soloist™

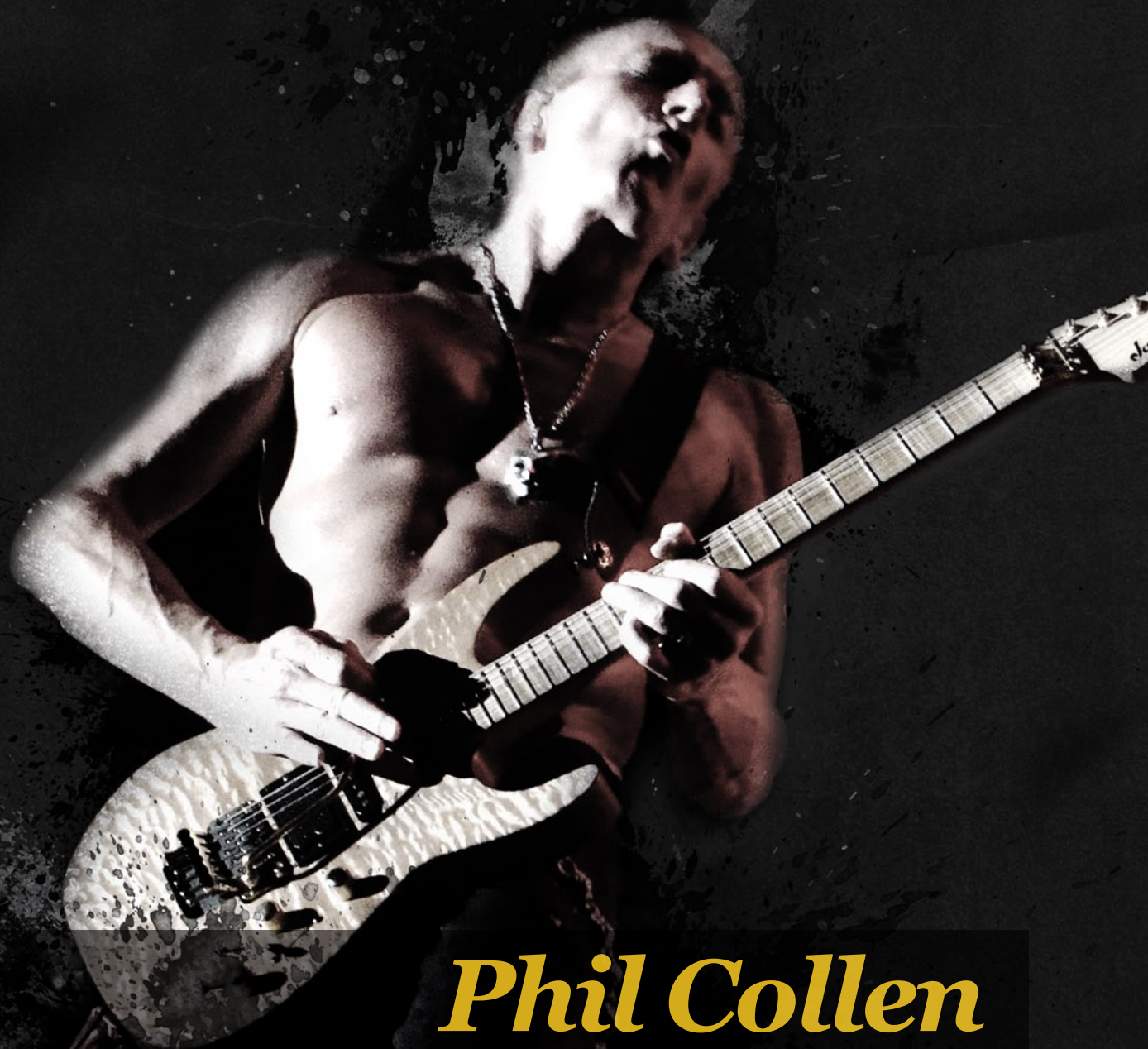
- Quartersawn maple neck with quilt maple binding and Floyd Rose® nut
- Ebony fingerboard with 12" radius and 24 jumbo stainless steel frets
- Natural body and headstock binding
- Broderick-designed Custom DiMarzio® direct-mounted humbucking neck and bridge pickups
- Recessed Floyd Rose® Lo-Pro bridge
- Kill switch
- Black hardware
- Planet Waves® Auto-Trim tuners
- Side-mounted Rhoads jack
- Ernie Ball® strap locks
- G&G case

6-String

- 2803056803** Black
- 2803056885** Transparent Black
- 2803056888** Transparent White
- 2803056890** Transparent Red

7-String

- 2803057803** Black
- 2803057885** Transparent Black
- 2803057888** Transparent White
- 2803057890** Transparent Red



Phil Collen

Def Leppard

Longtime Jackson friend and endorser (since 1986) and lead guitarist for one of the world's biggest-selling rock bands—hugely influential U.K. hit factory Def Leppard—Phil Collen has deftly wrung so many classic riffs, solos, parts and progressions from his Jackson® guitars that it's impossible to imagine the '80s and '90s rock charts—for Jackson history—without him. Collen's PC1 was one of the original Jackson signature guitars; based on the Dinky™ model and featuring more exotic woods and the Jackson sustainer/driver system.



USA PC1™ Phil Collen Signature

- Mahogany body with quilt maple top
- Bolt-on quartersawn hard rock maple neck
- Compound-radius flame maple fingerboard
- Licensed Fender® Stratocaster® headstock
- DiMarzio® pickups with Jackson Sustainer/Driver in HSS configuration
- Floyd Rose® Original tremolo
- Gold hardware

2803050802 *Au Natural, with case*

2803050821 *Chlorine, with case*

2803050835 *Purple Daze, with case*

2803050855 *Chameleon, with case*

2803050857 *Mocha, with case*

2803050879 *Solar, with case*





Phil Demmel

Machine Head

In the world of brutal, no-holds-barred metal, Machine Head is more than a band; it's an institution. Since exploding onto the scene with one of the genre's finest ever debut albums, 1992's *Burn My Eyes*, the Oakland, Calif.-based outfit has toured the globe relentlessly. Lead guitarist Phil Demmel, a Jackson friend and endorser since his late-1980s days with Violence, joined in 2003 and appeared on critically acclaimed 2007 release *The Blackening*, which took the metal world by storm, won numerous awards and reader polls, and earned Machine Head its first-ever Grammy nomination. The magnificent Demmelition King V™ signature model is based on a Custom Shop double-cut offering with specs that are not only true to Demmel's ferocious and formidable needs, but also those of cutting-edge metal guitarists everywhere.



*Phil Demmel
Signature King V*

*Phil Demmel
Signature X Series*

Phil Demmel Signature King V™

- Alder body
- Through-body quartersawn hard rock maple neck
- Compound-radius ebony fingerboard
- EMG® 81 and 60 humbucking pickups
- Floyd Rose® FRT 0200 tremolo
- Black hardware
- Painted bevels

2913060840	<i>Red with Black Bevels, with case</i>
2913060841	<i>Black with Silver Bevels, with case</i>
2913060858	<i>Gold with Black Bevels, with case</i>
2913060877	<i>White with Black Bevels, with case</i>
2913060899	<i>Black with White Dots, with case</i>

Phil Demmel Signature X Series

- Alder body
- Bolt-on rock maple neck
- Compound-radius rosewood fingerboard with 24 jumbo frets
- Sharkfin inlays
- EMG-HZ® pickups
- Floyd Rose® tremolo

2913061540	<i>Red with Black Bevels</i>
2913061541	<i>Black with Silver Bevels</i>



Scott Ian

Anthrax, the Damned Things





In a career spanning three decades, Scott Ian is a veritable thrash godfather who has made a living out of pummeling audiences worldwide with his huge sound and formidable chops. He not only co-founded venerable Bronx “Big Four” thrash institution Anthrax, but also helped create and define the entire mid-1980s new wave of U.S. metal. Anthrax has sold millions of albums, toured the world dozens of times over and earned three Grammy nominations, all due in no small part to Ian’s crushing and oft-airborne guitar work.

Jackson has honored the longtime Anthrax axe man with the Select Series Scott Ian T-1000 Soloist model, designed by Ian himself and acclaimed Master Builder Mike Shannon and based on Ian’s ‘87 Soloist™ (the one with the New York Yankees logo on it).

Scott Ian Soloist

- Super-sized neck-through mahogany Soloist body with 1/8" maple top and Quicksilver finish
- Oil-finished maple neck with compound-radius ebony fingerboard (12" to 16") and 24 jumbo frets
- “High Voltage” lightning bolt inlays designed by Shepard Fairey
- Ivoroid neck and headstock binding
- Single and double humbucking pickup configurations
- Seymour Duncan® Scott Ian El Diablo bridge pickup
- Seymour Duncan® ‘59 neck pickup (two-pickup model only)
- Original Floyd Rose® bridge (two-pickup model only)
- Tune-o-matic™ bridge (single-pickup model only)
- Black hardware
- Schaller® strap locks
- G&G case

2803058845 T-1000 Soloist 2H, Silver Burst

2803059845 T-1000 Soloist 1H, Silver Burst



Mark Morton

Lamb of God



Lamb of God guitarist Mark Morton has led his million-selling, Grammy-nominated band to the very forefront of new U.S. metal. By combining meticulous technique, angular off-kilter riffs and a black hole-heavy sound, Morton is redefining the genre and influencing whole new generations of guitarists. He collaborated closely with us on his signature model, creating it the “original” Jackson way—with pencil, paper and a whole lot of imagination. The result is the Mark Morton Dominion™—a versatile guitar for all types of music featuring a chambered body, dual humbucking pickups and coil splitters, joined later by the Mark Morton Signature X Series D2 Dominion.

Mark Morton Signature Dominion™

- Chambered mahogany body and flame maple top
- 24.75"-scale mahogany neck
- Compound-radius ebony fingerboard with medium frets and shark-eye inlays
- Seymour Duncan® '59™ humbucking pickups with coil tap switches
- Tune-o-matic™ bridge
- Sperzel® pearl-button tuners
- Chrome hardware

2910515316 *Wine Drunk, with gig bag*
2910515382 *Bourbon Burst, with gig bag*
2910515385 *River Bed, with gig bag*
2910515394 *Old School Burst, with gig bag*

Mark Morton Signature X Series D2

- Nato Dominion® Body
- Bolt-on maple neck
- 12" to 16" compound-radius rosewood fingerboard
- 22 medium frets
- White dot position inlays
- DiMarzio Mark Morton Signature Dominion® pickups
- Fully adjustable bridge with anchored tailpiece

2910506585 *Transparent Black*
2910506503 *Black*



Mark Morton Signature Dominion

Mark Morton Signature X Series D2



Adrian Smith

Iron Maiden

Adrian Smith



Iron Maiden is one of the most successful and influential metal bands of all time, thanks in no small measure to the molten yet melodic guitar work of Adrian Smith. With timeless songwriting craft and peerless live performances, Maiden continues to record and tour, charting all over the world and selling out stadiums in any country with electricity. Based on his original late '80s Custom Shop guitar, Smith's signature model boasts supreme Jackson tone, playability, versatility and classic looks.

Adrian Smith San Dimas® DK

- Alder body
- Bolt-on quartersawn maple neck
- Compound-radius ebony or maple fingerboard
- DiMarzio® Super Distortion™ bridge pickup with Fender® SCN™ middle and neck single-coil pickups (HSS configuration)
- White or black pickguard
- Floyd Rose® tremolo system
- Black hardware

2803051876 *Snow White with White Pickguard*

2803051899 *Gold with Black Pickguard, Ebony Fingerboard*

2803052876 *Snow White with Black Pickguard*

2803052899 *Gold with Black Pickguard, Maple Fingerboard*





Chris Beattie

Hatebreed

*Chris
Beattie*

As longtime bassist for crushing Connecticut hardcore outfit Hatebreed, Chris Beattie specializes in the sort of brutally bludgeoning four-string onslaught you'd rightly expect from a player of his caliber—and from the Jackson signature bass with his name on it. Listen to any Hatebreed album; then go look up *juggernaut* in the dictionary to truly understand what Beattie's take-no-prisoners sound, style and talent is all about.

Chris Beattie Signature Bass

- Alder body
- Bolt-on maple neck
- Four-in-line pointed headstock
- Compound-radius rosewood fingerboard with custom mace inlays
- EMG®-HZ pickups
- Active BEQ system
- Adjustable bridge
- Black hardware

2900504368 *Satin Black with gig bag*





John Campbell

Lamb of God

A founding member of Lamb of God, bassist John Campbell is highly regarded not only for creating a rock-solid sonic foundation, but also for his remarkably agile ability to double the complex light-speed riffs of the band's guitarists. No small feat, to be sure. After two years of extensive road testing by Campbell himself, Jackson honored him with his namesake signature bass model in 2008.





John Campbell Signature Bass

- Alder body (flame maple veneer on trans finishes)
- Bolt-on maple neck
- Compound-radius rosewood fingerboard with custom "JC" inlay
- EMG® 35DC and P® pickups with EMG® B-35DC active preamp circuit
- Badass® III bridge
- Black hardware

2909200303 *Black, with gig bag*

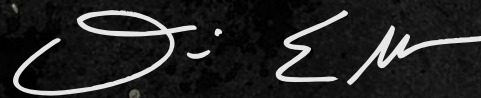
2909200368 *Satin Black, with gig bag*

2909200385 *Transparent Black, with gig bag*



David Ellefson

Megadeth



Bassist David Ellefson has reigned as a thrash bass godfather for three decades now, winning worldwide acclaim as a co-founding member of “Big Four” thrash innovator Megadeth and widely known for his distinctively fleet-fingered, hard hitting bass style and versatility. Simply put, nobody shreds a bass like Ellefson, and Jackson is proud to have his name on several formidable bass models, including the 2011 Jackson Custom Shop David Ellefson Concert Bass *Rust in Peace* 20th Anniversary Limited Edition, a 60-piece limited edition tribute model (in four- and five-string models) based on the instrument he played during the 2010 20th anniversary tour commemorating landmark 1990 Megadeth thrash-terpiece *Rust in Peace*.



USA Signature Concert Bass
(also available in 4-String Black
and 5-String Quicksilver)



Signature X Series
(CBX IV also available in Quicksilver
and CBX V also available in Black)

David Ellefson USA Signature Concert™ Bass

- Neck-through alder body
- Oil-finished quartersawn maple neck
- Compound-radius ebony fingerboard (12" to 16")
- 21 jumbo frets
- Abalone sharkfin inlay
- Ivoroid neck and headstock binding
- EMG® 35 DC bridge pickup (EMG® 40 DC on five-string model) and EMG® 35 CS bridge pickup (EMG® 40 CS on five-string model)
- Three-way pickup switching and EMG® BQS electronics
- Badass bridge
- Graphite nut
- Black hardware
- Non-locking Hipshot® tuners

2855581000 4-String, Black
2855582000 4-String, Quicksilver
2855583000 5-String, Black
2855584000 5-String, Quicksilver

David Ellefson Signature X Series

- Alder Concert Bass body
- Bolt-on quartersawn maple neck with special profile shape
- Ivoroid-bound black headstock with '90s-style Jackson logo
- Ivoroid binding and oiled finish
- Compound-radius (12"-16") rosewood fingerboard
- 21 jumbo frets and sharkfin inlays
- EMG® humbucking neck (HZ40N) and bridge (HZ40B) pickups
- EMG® BEQ3 active preamp
- Five domed control knobs (volume control, three-band EQ, blend)
- High-mass five-string bridge
- Black hardware
- David Ellefson silver "Fallout" logo on truss rod cover

2916640503 CBX IV Bass, Black
2916640521 CBX IV Bass, Quicksilver
2916650503 CBX V Bass, Black
2916650521 CBX V Bass, Quicksilver





X Series

Jackson X Series guitars are loaded with pure Jackson DNA—classic Jackson designs, outstanding tone, ultra-fast playability and eminently affordable value for 21st century guitarists. Built with the very latest in Jackson expertise and innovation, X Series models feature hot humbucking pickups that deliver well-balanced tone with tight bass, glassy mids and crunching highs. Their bound compound-radius rosewood fingerboards curve more dramatically at the nut for easy chording and flatten out approaching the neck joint for low-action bends without fretting out.

X Series models also feature distinctive sharkfin inlays, tremolo and hard-tail bridges, and a fantastic selection of striking finishes. More than the sum of their parts, these guitars are imbued with an X factor that makes them perfect modern shred machines that bring Jackson to a whole new generation of fleet-fingered players.

jacksonguitars.com/xseries

X Series Soloist™



Kawasaki Green



Transparent Black

Black

Soloist SLXT



Natural

Gun Metal Grey

Snow White

Super Light Soloist SLSXMG



Natural

Black

Kawasaki Green

Snow White

Soloist SLX



Soloist SLXQ

X Series Soloist™ guitars deck out Jackson's venerable double-cutaway workhorse with features such as basswood bodies, through-body maple necks, EMG® and Duncan Designed™ humbucking pickups, Floyd Rose® Special trem units (SLX, SLXQ and SLSXMG models) and TonePros® bridges (SLXT model). Their bound compound-radius rosewood fingerboards curve more dramatically at the nut for easy chording and flatten out farther up the neck for low-action bends without fretting out. Distinctive Soloist models with searing sound and value.

Soloist SLXT

- Basswood body (flame maple veneer on Trans Black finish)
- Through-body maple neck
- Bound compound-radius rosewood fingerboard
- 24 jumbo frets
- Passive EMG® HZ H4-AN (neck) and H4-B (bridge) humbucking pickups
- Three-way pickup switching
- TonePros® fully adjustable bridge
- Through-body strings

2916202503	<i>Black</i>
2916202569	<i>Kawasabi Green</i>
2916202585	<i>Transparent Black</i>

Soloist SLX

- Basswood body
- Through-body maple neck
- 24 jumbo frets
- Duncan Designed™ alnico HB102N (neck) and high-output ceramic HB102B (bridge) humbucking pickups
- Floyd Rose® Special double-locking two-point tremolo
- Three-way pickup switching

2916220502	<i>Natural</i>
2916220503	<i>Black</i>
2916220569	<i>Kawasabi Green</i>
2916220576	<i>Snow White</i>

Soloist SLXQ

- Basswood body with a quilt maple top veneer
- Through-body maple neck
- 24 jumbo frets
- Passive EMG® HZ H4-AN (neck) and H4-B (bridge) humbucking pickups
- Floyd Rose® Special double-locking two-point tremolo
- Three-way pickup switching

2916220515	<i>Burnt Cherry Sunburst</i>
-------------------	------------------------------

Super Light Soloist SLSXMG

- Basswood body (flame maple veneer on Natural finish)
- 24 jumbo frets
- Through-body maple neck and active EMG® 85 (neck) and 81 (bridge) humbucking pickups
- Floyd Rose® Special double-locking two-point tremolo
- Three-way pickup switching

2916240502	<i>Natural</i>
2916240544	<i>Gun Metal Grey</i>
2916240576	<i>Snow White</i>

X Series Rhoads™

X Series Rhoads guitars take the offset-V Jackson guitar that started it all and hot rod it with features such as basswood bodies, through-body maple necks, EMG® and Duncan Designed™ humbucking pickups, TonePros® bridges (RRXT and RR24XT models) and Floyd Rose® Special trem units (RRXMG model). Their bound compound-radius rosewood fingerboards curve more dramatically at the nut for easy chording and flatten out farther up the neck for low-action bends without fretting out. The most affordable neck-through Rhoads you'll ever lay eyes and hands on.

RR24XT Rhoads

- Basswood body
- Through-body maple neck
- Bound compound-radius rosewood fingerboard
- 24 jumbo frets
- Duncan Designed™ alnico HB102N (neck) and high-output ceramic HB102B (bridge) humbucking pickups
- Three-way pickup switching
- TonePros® fully adjustable bridge with through-body strings

2916302503 *Black*

2916302522 *Quicksilver with Black Bevels*

2916302574 *Black with Kawasaki Green Bevels*

RRXT Rhoads

- Basswood body (flame maple veneer on Trans Black finish)
- Through-body maple neck
- Bound compound-radius rosewood fingerboard
- 22 jumbo frets
- Duncan Designed™ alnico HB102N (neck) and high-output ceramic HB102B (bridge) humbucking pickups
- Three-way pickup switching
- TonePros® fully adjustable bridge with through-body strings

2916312503 *Black*

2916312549 *Kawasaki Green with Black Bevels*

2916312585 *Transparent Black*

RRXMG Rhoads

- Basswood body
- Through-body maple neck
- Bound compound-radius rosewood fingerboard
- 24 jumbo frets
- Active EMG® 85 (neck) and 81 (bridge) humbucking pickups
- Floyd Rose® Special double-locking two-point tremolo
- Three-way pickup switching

2916320503 *Black*

2916320548 *White with Black Pinstripes*



RR24XT Rhoads



RRXT Rhoads



White with Black pin stripes

RRXMG Rhoads



Burnt Cherry Sunburst

Black

Quicksilver

Black with Blood Red Bevels

KVXT King V

X Series King V™



KVXM King V

Both X Series King V guitars present Jackson's most regal shred machine affordably attired in features including basswood bodies, through-body maple necks with 24 jumbo frets, and your choice of active EMG® humbucking pickups and Floyd Rose® Special trem (KVXMG) or passive

EMG® humbucking pickups and TonePros® bridge (KVXT). Their bound compound-radius rosewood fingerboards curve more dramatically at the nut for easy chording and flatten out farther up the neck for low-action bends without fretting out. All hail the King ...

KVXT King V

- Basswood body
- Through-body maple neck
- Bound compound-radius rosewood fingerboard
- 24 jumbo frets
- EMG® HZ H4-B and HZ H4-AN humbucking pickups
- Three-way pickup switching
- TonePros® fully adjustable bridge with through-body strings

2916402501	<i>Burnt Cherry Sunburst</i>
2916402503	<i>Black</i>
2916402521	<i>Quicksilver</i>
2916402573	<i>Black with Blood Red Bevels</i>

KVXMG King V

- Basswood body
- Through-body maple neck
- Bound compound-radius rosewood fingerboard
- 24 jumbo frets
- Active EMG® 85 (neck) and 81 (bridge) humbucking pickups
- Floyd Rose® Special double-locking two-point tremolo
- Three-way pickup switching

2916400503	<i>Black</i>
2916400569	<i>Kawasabi Green</i>
2916400576	<i>Snow White</i>

X Series Warrior™



WRXMG Warrior

WRXTMG Warrior

The two X Series Warrior models are fiendishly affordable takes on Jackson's radically X-shaped shredder, with features including basswood bodies, through-body maple necks with 24 jumbo frets, active EMG® humbucking pickups and a choice of Floyd Rose® Special trem (WRXMG) or TonePros®

bridge (WRXTMG). Their bound compound-radius rosewood fingerboards curve more dramatically at the nut for easy chording and flatten out farther up the neck for low-action bends without fretting out. X-ceptional tone, performance and value.

WRXMG Warrior

- Basswood body
- Through-body maple neck
- Bound compound-radius rosewood fingerboard
- 24 jumbo frets
- Active EMG® 85 (neck) and 81 (bridge) humbucking pickups
- Floyd Rose® Special double-locking two-point tremolo
- Three-way pickup switching

2916500503 *Black*
2916500522 *Quicksilver with Black Bevels*

WRXTMG Warrior

- Basswood body
- Through-body maple neck
- Bound compound-radius rosewood fingerboard
- 24 jumbo frets
- Active EMG® 85 (neck) and 81 (bridge) humbucking pickups
- Three-way pickup switching
- TonePros® fully adjustable bridge with through-body strings

2916502503 *Black*
2916502522 *Quicksilver with Black Bevels*



X Series Dinky™

The X Series DKXT Dinky model rocks features including an archtop basswood body, bolt-on maple neck with 24 jumbo frets, passive EMG® humbucking pickups and TonePros® bridge. Bound compound-radius rosewood fingerboard curves more dramatically at the nut for easy chording and flattens out farther up the neck for low-action bends without fretting out.

DKXT Dinky

- Arch-top basswood body (quilt maple veneer on Trans Red finish)
- Bolt-on maple neck
- 24 jumbo frets
- Passive EMG® HZ H4-AN (neck) and H4-B (bridge) humbucking pickups
- Three-way pickup switching
- TonePros® fully adjustable bridge with through-body strings

2916100503 *Black*

2916100576 *Snow White*

2916100590 *Transparent Red*





JS Series

Jackson JS Series guitars and basses are swift, sleek, deadly and affordable — built with more than 30 years of Jackson experience and expertise as ultimate shred machines.

Jackson JS models are armed with high-output pickups, jumbo frets and a tilt-back headstock — features normally found on more expensive instruments. This design negates the need for string trees, which often cause tuning issues due to the unnecessary friction they create. JS Series guitars and basses also feature compound-radius fingerboards. The radius is roundest near the nut, which is perfect for fretting deadly riffs, crushing chords and seismic deep bass. This curvature gradually flattens out farther up the fingerboard, which is ideal for light-speed soloing, effortless string bending and singing high-end bass.

The current lineup of JS2 and JS3 models features custom-voiced high-output Jackson pickups and 24-fret fingerboards with trademark sharkfin inlays. Five of the JS3 models are armed with Floyd Rose®-licensed double-locking tremolo systems. Finally, new JS Series Concert Bass models add a sleekly seismic new dimension to the family. Grab a new JS Series instrument by the neck — your fingers and your ears will thank you.

jacksonguitars.com/jsseries

JS Series Rhoads™



JS32T Rhoads

JS32 Rhoads

JS Series Rhoads models present the most affordable iterations yet of Jackson's venerable Rhoads guitar, the instrument that started it all more than 30 years ago. Features include bolt-on maple necks, 24-fret compound-radius rosewood fingerboards

with classic sharkfin inlays, dual high-output humbucking pickups and your choice of Floyd Rose® double-locking tremolo (JS32 model) or string-through-body bridge (JS32T model). The most eminently affordable Rhoads ever.

JS32T Rhoads

- Cedro body
- 24-fret compound-radius rosewood fingerboard with Jackson's classic sharkfin inlay
- Bolt-on maple neck
- Jackson® CVR high-output humbucking pickups
- Adjustable string-through-body bridge
- Chrome hardware

JS32 Rhoads

- Cedro body
- 24-fret compound-radius rosewood fingerboard with Jackson's classic sharkfin inlay
- Bolt-on maple neck
- Jackson® CVR high-output humbucking pickups
- Double-locking Floyd Rose®-licensed tremolo system
- Chrome hardware

JS Series King V™



JS32T King V



JS32 King V

The two JS Series King V models bring the greatest value yet to Jackson's most regally formidable guitar. Features include bolt-on maple necks, 24-fret compound-radius rosewood fingerboards with classic sharkfin inlays, dual high-output

humbucking pickups and your choice of Floyd Rose® double-locking tremolo (JS32 model) or string-through-body bridge (JS32T model). Shredding performance and value fit for a King.

JS32T King V

- Cedro body
- 24-fret compound-radius rosewood fingerboard with Jackson's classic sharkfin inlay
- Bolt-on maple neck
- Jackson® CVR high-output humbucking pickups
- Adjustable string-through-body bridge
- Chrome hardware

JS32 King V

- Cedro body
- 24-fret compound-radius rosewood fingerboard with Jackson's classic sharkfin inlay
- Bolt-on maple neck
- Jackson® CVR high-output humbucking pickups
- Double-locking Floyd Rose®-licensed tremolo system
- Chrome hardware

JS Series Warrior™

Both JS Series Warrior models infuse Jackson's most distinctively shaped shred machine with not only great performance, but also the greatest value ever. Features include bolt-on maple necks, 24-fret compound-radius rosewood fingerboards with classic sharkfin inlays, dual high-output humbucking pickups and your choice of Floyd Rose® double-locking tremolo (JS32 model) or string-through-body bridge (JS32T model). Radical Jackson design, performance and affordability.

JS32T Warrior

- Cedro body
- 24-fret compound-radius rosewood fingerboard with Jackson's classic sharkfin inlay
- Bolt-on maple neck
- Jackson® CVR high-output humbucking pickups
- Adjustable string-through-body bridge
- Chrome hardware

JS32 Warrior

- Cedro body
- 24-fret compound-radius rosewood fingerboard with Jackson's classic sharkfin inlay
- Bolt-on maple neck
- Jackson® CVR high-output humbucking pickups
- Double-locking Floyd Rose®-licensed tremolo system
- Chrome hardware



JS32T Warrior
(also available in Black)

JS Series Kelly™

JS32T Kelly

JS32 Kelly



Both JS Series Kelly guitars are like electrifying bolts from the blue in terms of both design and affordability. Features include bolt-on maple necks, 24-fret compound-radius rosewood fingerboards with classic sharkfin inlays, dual high-output humbucking pickups and your choice of Floyd Rose® double-locking tremolo (JS32 model) or string-through-body bridge (JS32T model). Jackson's most distinctively balanced shredder, now with its greatest value ever.

JS32T Kelly

- Cedro body
- 24-fret compound-radius rosewood fingerboard with Jackson's classic sharkfin inlay
- Bolt-on maple neck
- Jackson® CVR high-output humbucking pickups
- Adjustable string-through-body bridge
- Chrome hardware

JS32 Kelly

- Cedro body
- 24-fret compound-radius rosewood fingerboard with Jackson's classic sharkfin inlay
- Bolt-on maple neck
- Jackson® CVR high-output humbucking pickups
- Double-locking Floyd Rose®-licensed tremolo system
- Chrome hardware

JS Series Dinky™

All four JS Series Dinky guitars offer superior Jackson build and performance in the family's most affordable models yet. Features include bolt-on maple necks, 24-fret compound-radius rosewood fingerboards with classic sharkfin inlays, fulcrum tremolo bridges (JS22R and JS23 models), dual high-output humbucking pickups (except HSS-configured JS23 model), Floyd Rose® double-locking tremolo model (JS32R) and string-through-body model (JS32RT).

JS22R Dinky

- Cedro body (with flame maple veneer on trans finishes)
- 24-fret compound-radius rosewood fingerboard with Jackson's classic sharkfin inlay
- Bolt-on maple neck
- Jackson® high-output humbucking pickups
- Fulcrum bridge
- Chrome hardware

JS23 Dinky

- Cedro body
- 24-fret compound-radius rosewood fingerboard with Jackson's classic sharkfin inlay
- Bolt-on maple neck
- Jackson® high-output humbucking (bridge) and single-coil (middle and neck) pickups
- Fulcrum bridge
- Chrome hardware

JS32RT Dinky

- Cedro body
- 24-fret compound-radius rosewood fingerboard with Jackson's classic sharkfin inlay
- Bolt-on maple neck
- Jackson® CVR high-output humbucking pickups
- Adjustable string-through-body bridge
- Chrome hardware

JS32R Dinky

- Cedro body
- 24-fret compound-radius rosewood fingerboard with Jackson's classic sharkfin inlay
- Bolt-on maple neck
- Jackson® CVR high-output humbucking pickups
- Double-locking Floyd Rose®-licensed tremolo system
- Chrome hardware





JS32RT Dinky



JS32R Dinky



JS Series Concert™ Basses



Jackson's JS Series Concert Bass models rock seismic sound, style and affordability. Features include bolt-on maple necks, 24-fret compound-radius rosewood fingerboards with classic sharkfin inlays, dual high-output humbucking pickups and high-mass bridges in four-string (JS2, JS3) and five-string (JS3V) models. Go off the deep end with superior Jackson vibe, voice and value.

JS2 Concert Bass

- Cedro body
- Bolt-on maple neck
- Compound-radius rosewood fingerboard with 24 jumbo frets
- Jackson dual humbucking high-output pickups
- High-mass bridge
- Black hardware

JS3 Concert Bass

- Cedro body
- Fully bound bolt-on maple neck
- Compound-radius rosewood fingerboard with 24 jumbo frets
- Jackson dual humbucking high-output pickups
- High-mass bridge
- Active 3-Band EQ
- Black hardware



JS3V Concert Bass

- Cedro body
- Bolt-on maple neck
- Compound-radius rosewood fingerboard with 24 jumbo frets
- Jackson dual humbucking high-output pickups
- High-mass bridge
- Active 3-Band EQ
- Black hardware





*Play the Best
and F#@k the Rest!*

**Design the Jackson guitar of your dreams
now at jacksonguitars.com/guitarbuilder**

Jackson®
JACKSONGUITARS.COM

© 2012 JCMi. Jackson®, The Bloodline™, Concert™, Dinky™, Kelly™, King V™, Soloist™, Warrior™ and the distinctive headstock designs commonly found on these guitars are trademarks of Jackson/Charvel Manufacturing, Inc. (JCMi). All rights reserved.

Part Number: 9911090218